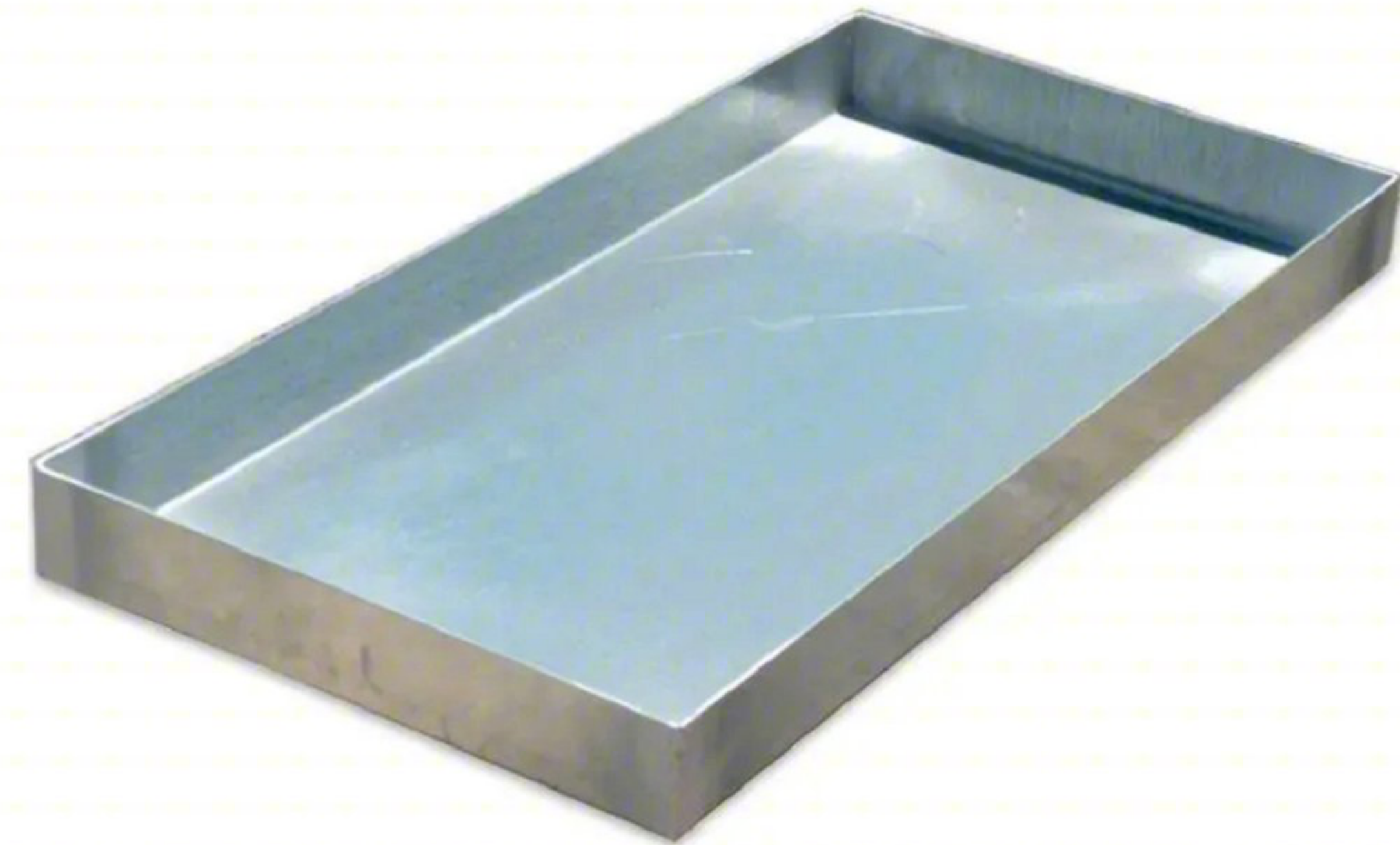


# DRAIN PANS



**FLDP(WidthXDepth)  
Add "R" for Rails**

**FLDP(WidthXDepth)  
Add "D" for Drain**

Support Rails for drain pans are optional\*  
Engineering drawings available

Corners are welded  
for strength.  
Drain hole w/PVC is optional\*

Part Code	Description	Size	U/M
DP2222	Galvanized Steel Drain Pan	22" x 22" x 2"	Ea - Case
DP2224	Galvanized Steel Drain Pan	22" x 24" x 2"	Ea - Case
DP2424	Galvanized Steel Drain Pan	24" x 24" x 2"	Ea - Case
DP2626	Galvanized Steel Drain Pan	26" x 26" x 2"	Ea - Case
DP3030	Galvanized Steel Drain Pan	30" x 30" x 2"	Ea - Case
DP2645	Galvanized Steel Drain Pan	26" x 45" x 2"	Ea - Case
DP2648	Galvanized Steel Drain Pan	26" x 48" x 2"	Ea - Case
DP2654	Galvanized Steel Drain Pan	26" x 54" x 2"	Ea - Case
DP2658	Galvanized Steel Drain Pan	26" x 58" x 2"	Ea - Case
DP2662	Galvanized Steel Drain Pan	26" x 62" x 2"	Ea - Case
Add "D"	Add "D" to end of part code for PVC drain		
Add "R"	Add "R" to end of part code for Rails		