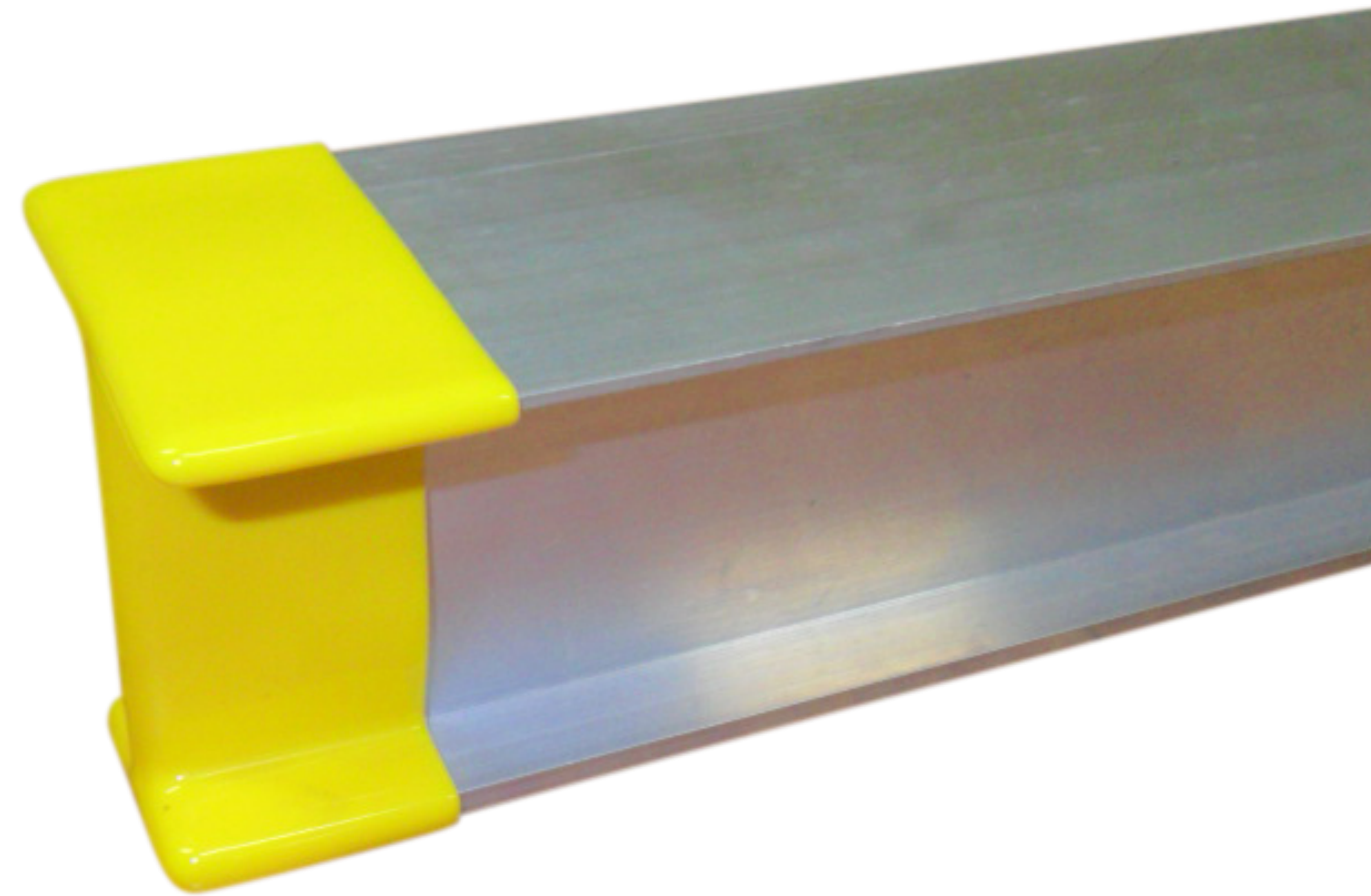
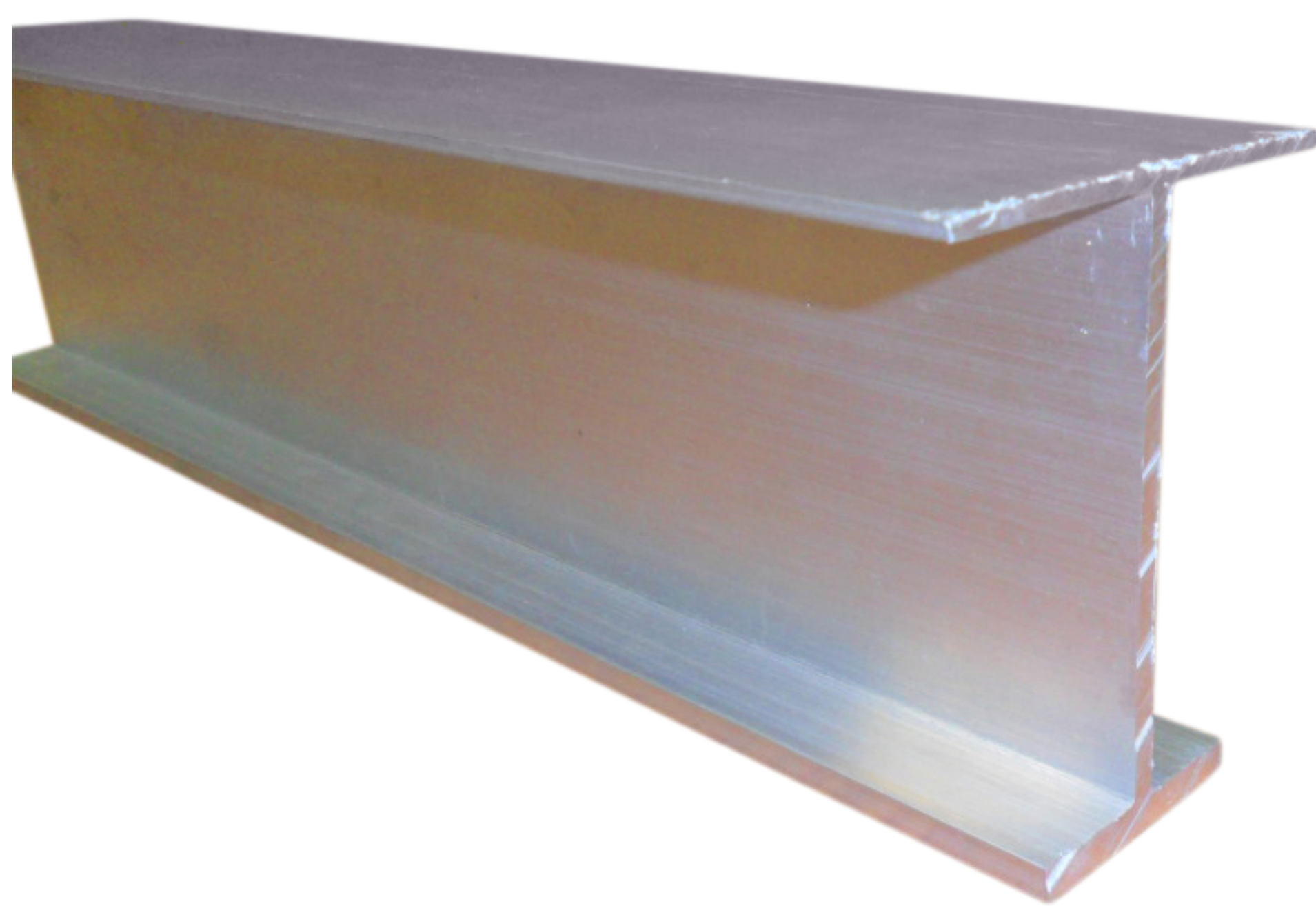


# I-BEAMS, CAPS & ELECTRICAL BOX SUPPORT

I-Beam are typically cut to length but are stocked in 3 foot intervals

Part Code	Description	Size
BEAM-3	I- Beam, 3 ft Length	3'
BEAM-6	I- Beam, 6 ft Length	6'
BEAM-9	I- Beam, 9 ft Length	9'
BEAM-12	I- Beam, 12 ft Length	12'
BEAM-15	I- Beam, 15 ft Length	15'
BEAM-18	I- Beam, 18 ft Length	18'

**FLBEAM-(Length)**



**FLBEAMCAP**

**FLECSB613**

Electrical Box Mounting bracket.  
Designed to install Electrical quick disconnect box to I-beam.

