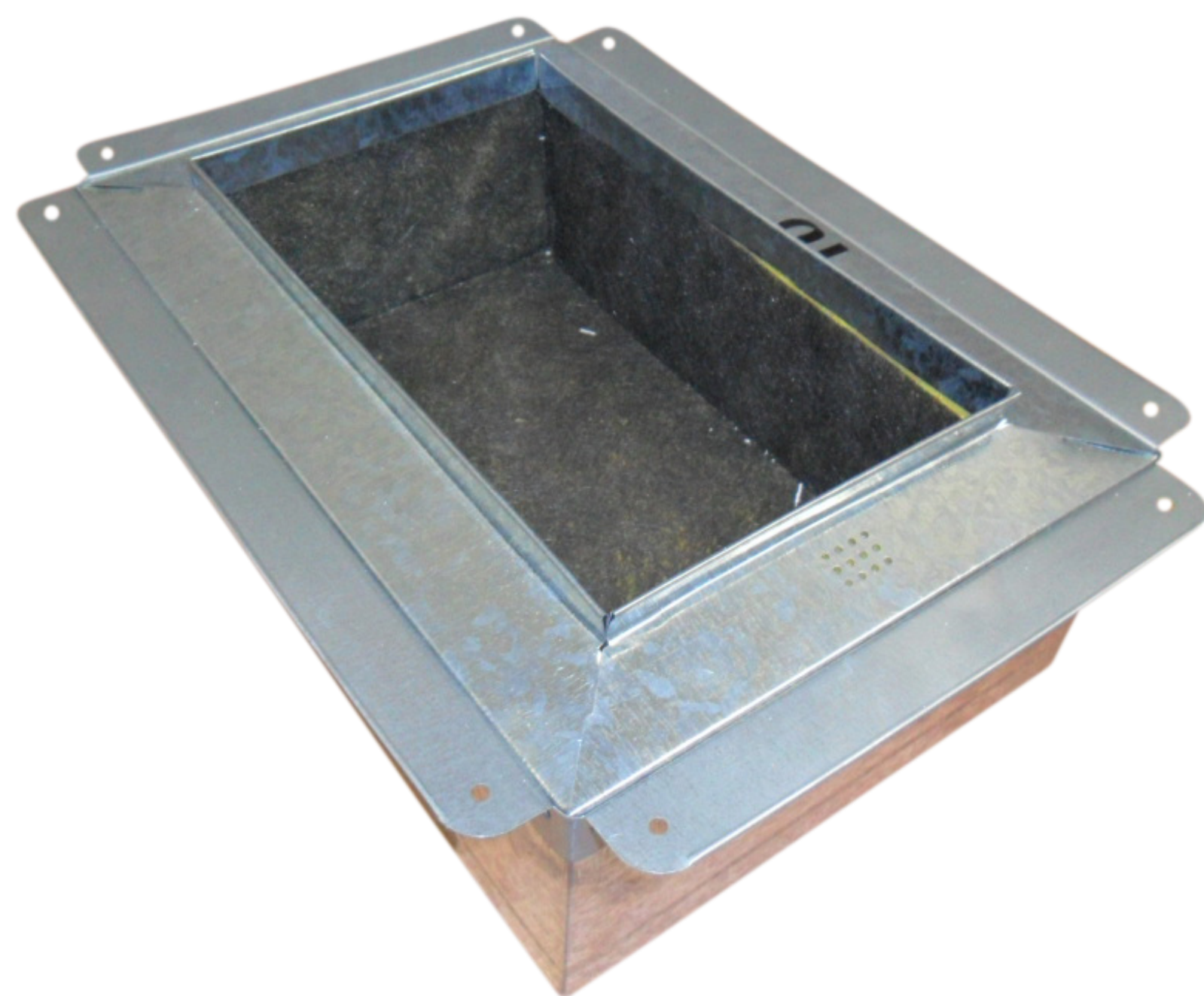


REGISTER BOXES R4

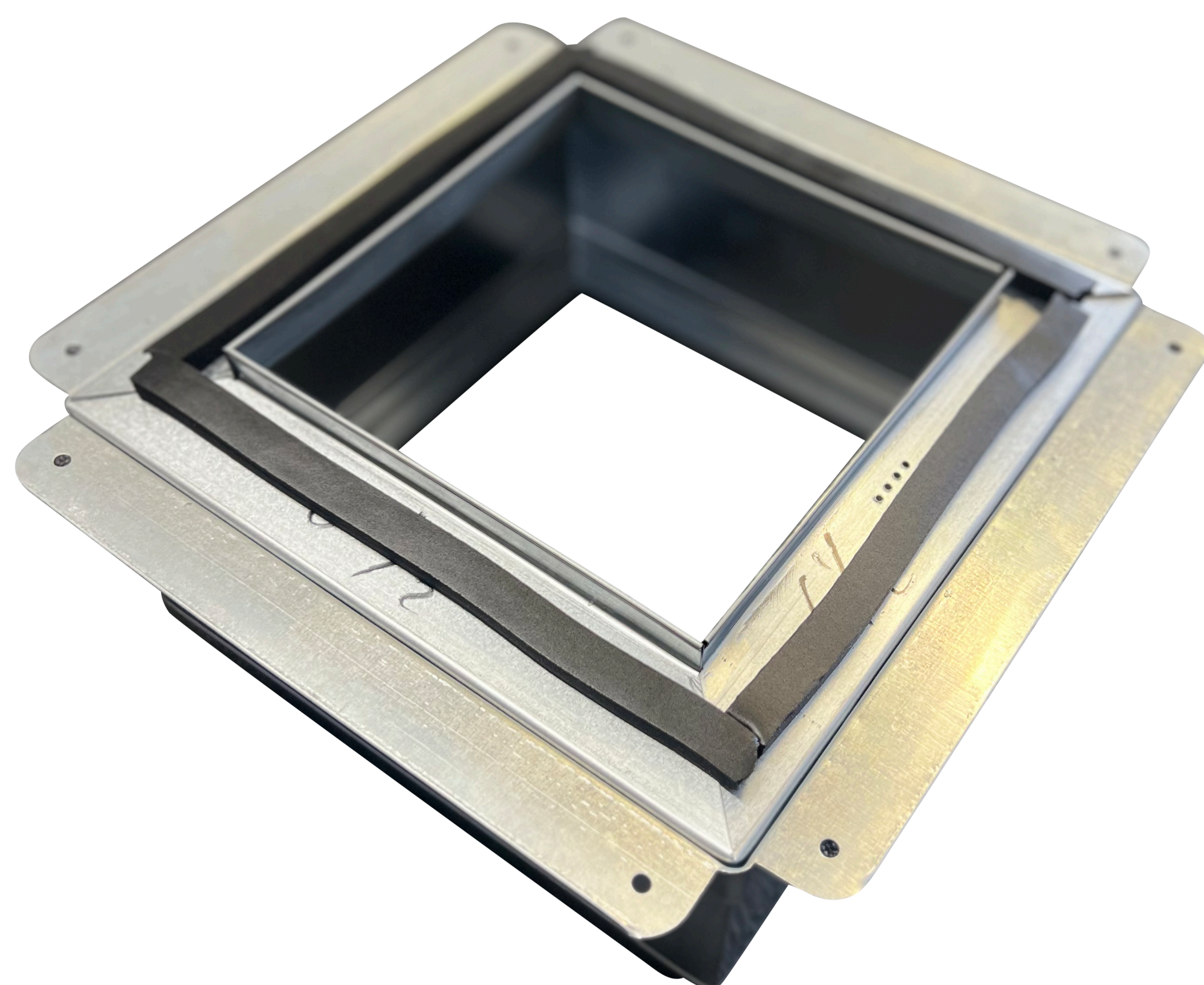
FLR4B(Length x Width)



INSULATED R4 REGISTER BOX without Gasket

| Part Code | Description | Size | Qty per case | U/M |
|-----------|--|---------|--------------|-----|
| FLR4B44 | Register Box 4"x4" Galvanized Steel Sheet - 30 Gauge | 4"x4" | 72 | Ea |
| FLR4B64 | Register Box 6"x4" Galvanized Steel Sheet - 30 Gauge | 6"x4" | 54 | Ea |
| FLR4B66 | Register Box 6"x6" Galvanized Steel Sheet - 30 Gauge | 6"x6" | 45 | Ea |
| FLR4B84 | Register Box 8"x4" Galvanized Steel Sheet - 30 Gauge | 8"x4" | 48 | Ea |
| FLR4B86 | Register Box 8"x6" Galvanized Steel Sheet - 30 Gauge | 8"x6" | 36 | Ea |
| FLR4B88 | Register Box 8"x8" Galvanized Steel Sheet - 30 Gauge | 8"x8" | 28 | Ea |
| FLR4B104 | Register Box 10"x4" Galvanized Steel Sheet - 30 Gauge | 10"x4" | 36 | Ea |
| FLR4B106 | Register Box 10"x6" Galvanized Steel Sheet - 30 Gauge | 10"x6" | 30 | Ea |
| FLR4B108 | Register Box 10"x8" Galvanized Steel Sheet - 30 Gauge | 10"x8" | 24 | Ea |
| FLR4B1010 | Register Box 10"x10" Galvanized Steel Sheet - 30 Gauge | 10"x10" | 20 | Ea |
| FLR4B124 | Register Box 12"x4" Galvanized Steel Sheet - 30 Gauge | 12"x4" | 33 | Ea |
| FLR4B126 | Register Box 12"x6" Galvanized Steel Sheet - 30 Gauge | 12"x6" | 22 | Ea |
| FLR4B128 | Register Box 12"x8" Galvanized Steel Sheet - 30 Gauge | 12"x8" | 19 | Ea |
| FLR4B1210 | Register Box 12"x10" Galvanized Steel Sheet - 30 Gauge | 12"x10" | 16 | Ea |
| FLR4B1212 | Register Box 12"x12" Galvanized Steel Sheet - 30 Gauge | 12"x12" | 10 | Ea |
| FLR4B146 | Register Box 14"x6" Galvanized Steel Sheet - 30 Gauge | 14"x6" | 22 | Ea |
| FLR4B148 | Register Box 14"x8" Galvanized Steel Sheet - 30 Gauge | 14"x8" | 17 | Ea |
| FLR4B1410 | Register Box 14"x10" Galvanized Steel Sheet - 30 Gauge | 14"x10" | 14 | Ea |
| FLR4B1414 | Register Box 14"x14" Galvanized Steel Sheet - 30 Gauge | 14"x14" | 9 | Ea |
| FLR4B166 | Register Box 16"x6" Galvanized Steel Sheet - 30 Gauge | 16"x6" | 22 | Ea |
| FLR4B168 | Register Box 16"x8" Galvanized Steel Sheet - 30 Gauge | 16"x8" | 14 | Ea |
| FLR4B1610 | Register Box 16"x10" Galvanized Steel Sheet - 30 Gauge | 16"x10" | 14 | Ea |
| FLR4B1616 | Register Box 16"x16" Galvanized Steel Sheet - 30 Gauge | 16"x16" | 7 | Ea |
| FLR4B186 | Register Box 18"x6" Galvanized Steel Sheet - 30 Gauge | 18"x6" | 18 | Ea |
| FLR4B188 | Register Box 18"x8" Galvanized Steel Sheet - 30 Gauge | 18"x8" | 14 | Ea |
| FLR4B1818 | Register Box 18"x18" Galvanized Steel Sheet - 30 Gauge | 18"x18" | 7 | Ea |
| FLR4B206 | Register Box 20"x6" Galvanized Steel Sheet - 30 Gauge | 20"x6" | 18 | Ea |
| FLR4B2020 | Register Box 20"x20" Galvanized Steel Sheet - 30 Gauge | 20"x20" | 6 | Ea |
| FLR4B2424 | Register Box 24"x24" Galvanized Steel Sheet - 30 Gauge | 24"x24" | 5 | Ea |

FLR4B(Length x Width)G with gasket



INSULATED R4 REGISTER BOX with Gasket

| Part Code | Description | Size | Qty per case | U/M |
|------------|--|---------|--------------|-----|
| FLR4B44G | Register Box 4"x4" Galvanized Steel Sheet - 30 Gauge | 4"x4" | 72 | Ea |
| FLR4B64G | Register Box 6"x4" Galvanized Steel Sheet - 30 Gauge | 6"x4" | 54 | Ea |
| FLR4B66G | Register Box 6"x6" Galvanized Steel Sheet - 30 Gauge | 6"x6" | 45 | Ea |
| FLR4B84G | Register Box 8"x4" Galvanized Steel Sheet - 30 Gauge | 8"x4" | 48 | Ea |
| FLR4B86G | Register Box 8"x6" Galvanized Steel Sheet - 30 Gauge | 8"x6" | 36 | Ea |
| FLR4B88G | Register Box 8"x8" Galvanized Steel Sheet - 30 Gauge | 8"x8" | 28 | Ea |
| FLR4B104G | Register Box 10"x4" Galvanized Steel Sheet - 30 Gauge | 10"x4" | 36 | Ea |
| FLR4B106G | Register Box 10"x6" Galvanized Steel Sheet - 30 Gauge | 10"x6" | 30 | Ea |
| FLR4B108G | Register Box 10"x8" Galvanized Steel Sheet - 30 Gauge | 10"x8" | 24 | Ea |
| FLR4B1010G | Register Box 10"x10" Galvanized Steel Sheet - 30 Gauge | 10"x10" | 20 | Ea |
| FLR4B124G | Register Box 12"x4" Galvanized Steel Sheet - 30 Gauge | 12"x4" | 33 | Ea |
| FLR4B126G | Register Box 12"x6" Galvanized Steel Sheet - 30 Gauge | 12"x6" | 22 | Ea |
| FLR4B128G | Register Box 12"x8" Galvanized Steel Sheet - 30 Gauge | 12"x8" | 19 | Ea |
| FLR4B1210G | Register Box 12"x10" Galvanized Steel Sheet - 30 Gauge | 12"x10" | 16 | Ea |
| FLR4B1212G | Register Box 12"x12" Galvanized Steel Sheet - 30 Gauge | 12"x12" | 10 | Ea |
| FLR4B146G | Register Box 14"x6" Galvanized Steel Sheet - 30 Gauge | 14"x6" | 22 | Ea |
| FLR4B148G | Register Box 14"x8" Galvanized Steel Sheet - 30 Gauge | 14"x8" | 17 | Ea |
| FLR4B1410G | Register Box 14"x10" Galvanized Steel Sheet - 30 Gauge | 14"x10" | 14 | Ea |
| FLR4B1414G | Register Box 14"x14" Galvanized Steel Sheet - 30 Gauge | 14"x14" | 9 | Ea |
| FLR4B166G | Register Box 16"x6" Galvanized Steel Sheet - 30 Gauge | 16"x6" | 22 | Ea |
| FLR4B168G | Register Box 16"x8" Galvanized Steel Sheet - 30 Gauge | 16"x8" | 14 | Ea |
| FLR4B1610G | Register Box 16"x10" Galvanized Steel Sheet - 30 Gauge | 16"x10" | 14 | Ea |
| FLR4B1616G | Register Box 16"x16" Galvanized Steel Sheet - 30 Gauge | 16"x16" | 7 | Ea |
| FLR4B186G | Register Box 18"x6" Galvanized Steel Sheet - 30 Gauge | 18"x6" | 18 | Ea |
| FLR4B188G | Register Box 18"x8" Galvanized Steel Sheet - 30 Gauge | 18"x8" | 14 | Ea |
| FLR4B1818G | Register Box 18"x18" Galvanized Steel Sheet - 30 Gauge | 18"x18" | 7 | Ea |
| FLR4B206G | Register Box 20"x6" Galvanized Steel Sheet - 30 Gauge | 20"x6" | 18 | Ea |
| FLR4B2020G | Register Box 20"x20" Galvanized Steel Sheet - 30 Gauge | 20"x20" | 6 | Ea |
| FLR4B2424G | Register Box 24"x24" Galvanized Steel Sheet - 30 Gauge | 24"x24" | 5 | Ea |